



K-TOUGH™ ***K-TOUGH™ OIL***

by Kuriyama

High Pressure Suction & Discharge Hoses for Heavy Duty Industrial Applications

High Working Pressures

Abrasion Resistant Cover

Excellent Flexibility

High Cycle Strength

Food Grade

**NEW
PRODUCTS!**

K-Tough™ K9296 Series

K-Tough™ Oil K9593 Series

 **Kuriyama of America, Inc.**



K-TOUGH[™]

K9296 Series

High Pressure Wire & Yarn Reinforced Suction & Discharge Hose

General Applications:

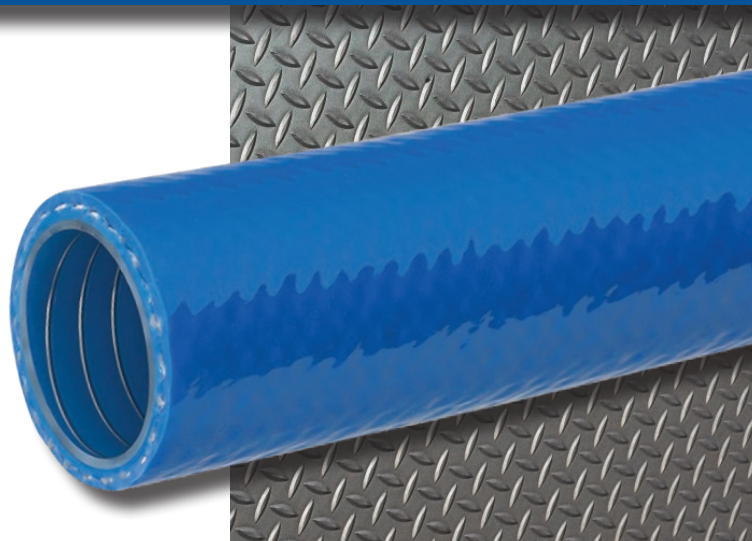
- Batch plants
- Constant flex applications
- Liquid chemical handling[†]
- Mining applications (MSHA)
- Oil field water hauling
- Suction & discharge of water and slurries
- Tank trucks

Construction: Clear phthalate free PVC core, galvanized steel wire helix, high tensile strength yarn reinforcement and blue phthalate free PVC cover.

Service Temperature Range: -5°F (-20°C) to 150°F (+65°C)*

Features and Advantages:

- **Food Grade Materials** – Hose complies with applicable FDA requirements.
- **Increased Pressure Rating** – New heavy duty construction results in a highly durable product, designed for both indoor and demanding outdoor applications.
- **Superior Flexibility** – More flexible than other similar hoses for ease-of-use.
- **High Cycle Strength** – Designed to resist damage from constant flex applications.
- **Abrasion Resistant Cover** – Resists wear from being dragged on rough surfaces.
- **Static Dissipative** – Steel wire helps prevent the build-up of static electricity for added safety (see below ^{††}).
- **MSHA Accepted** – Cover material accepted by MSHA as having met the requirements for acceptance of flame-resistant solid products taken into mines for hoses transferring air, oil, water or other fluids.



Nominal Specifications

Series	Size Code	Nominal ID		Nominal OD		Max. Working Pressure (psi) @ 70°F (20°C)	Vacuum Rating (in. Hg) @ 70°F (20°C)	Standard Length (ft.)	Approx. Weight Per Pkg. (lbs.)	Min. Bend Radius (in.) @ 70°F (20°C)
		(in)	(mm)	(in)	(mm)					
K9296	24	1.50	38.1	2.03	51.6	300	29.9	50/100	45/90	5.5
K9296	32	2.00	50.8	2.57	65.3	275	29.9	50/100	62/124	7.0
K9296	40	2.50	63.5	3.07	78.0	150	29.9	50/100	79/158	9.0
K9296	48	3.00	76.2	3.57	90.7	150	29.9	50/100	90/180	11.0

Note: Pressure ratings can only be obtained with proper coupling procedures. Use of compression fitting with Kuri Tec[®] reinforced hose is not recommended. Hose claims involving use of these fittings will be disallowed.

†† Caution: This product is designed to help dissipate static electricity when the metal wire is properly connected to ground through the fitting or other means.

† Caution: Consult Kuri Tec PVC chemical resistance guide for suitability.

* Actual service temperature range is application dependent. Working pressure decreases as temperature increases.

Note: For details of the following compliances, refer to page 63 of the Kuri Tec catalog.

FDA⁽⁰³⁾, MSHA⁽⁰⁸⁾, PHTHALATE FREE⁽¹⁵⁾, RoHS⁽¹⁶⁾

Because we continually examine ways to improve our products, we reserve the right to alter specifications or discontinue products without prior notice.

K-TOUGH[™] OIL

K9593 Series

High Pressure Oil Resistant Wire & Yarn Reinforced Suction & Discharge Hose

General Applications:

- Batch plants
- Constant flex applications
- Liquid chemical handling[†]
- Mining applications (MSHA)
- Oil field water hauling
- Suction & discharge of water and slurries
- Tank trucks
- Transfer of petroleum and other oil based products

Construction: Clear phthalate free PVC/polyurethane blended core, galvanized steel wire helix, high tensile strength yarn reinforcement and black phthalate free PVC/polyurethane blended cover.

Service Temperature Range: -5°F (-20°C) to 150°F (+65°C)*

Features and Advantages:

- **Food Grade Materials** – Hose complies with applicable FDA requirements.
- **Increased Pressure Rating** – New heavy duty construction resulting in a highly durable product, designed for both indoor and demanding outdoor applications.
- **Superior Flexibility** – More flexible than other similar hoses for ease-of-use.
- **High Cycle Strength** – Designed to resist damage from constant flex applications.
- **Abrasion Resistant Cover** – Resists wear from being dragged on rough surfaces.
- **Static Dissipative** – Steel wire helps prevent the build-up of static electricity for added safety (see below ^{††}).
- **Oil Resistant** – Meets ARPM Class A (High oil resistance) rating.
- **MSHA Accepted** – Cover material accepted by MSHA as having met the requirements for acceptance of flame-resistant solid products taken into mines for hoses transferring air, oil, water or other fluids.



Nominal Specifications

Series	Size Code	Nominal ID		Nominal OD		Max. Working Pressure (psi) @ 70°F (20°C)	Vacuum Rating (in. Hg) @ 70°F (20°C)	Standard Length (ft.)	Approx. Weight Per Pkg. (lbs.)	Min. Bend Radius (in.) @ 70°F (20°C)
		(in)	(mm)	(in)	(mm)					
K9593	24	1.50	38.1	2.03	51.6	300	29.9	50/100	45/90	5.5
K9593	32	2.00	50.8	2.57	65.3	275	29.9	50/100	62/124	7.0
K9593	40	2.50	63.5	3.07	78.0	150	29.9	50/100	79/158	9.0
K9593	48	3.00	76.2	3.57	90.7	150	29.9	50/100	90/180	11.0

Note: Working Pressure decreases as temperature increases. Pressure ratings can only be obtained with proper coupling procedures. Use of compression fitting with Kuri Tec[®] reinforced hose is not recommended. Hose claims involving use of these fittings will be disallowed.

^{††} **Caution:** This product is designed to help dissipate static electricity when the metal wire is properly connected to ground through the fitting or other means.

[†] **Caution:** Consult Kuri Tec[®] PVC chemical resistance guide for suitability.

* Actual service temperature range is application dependent. Working pressure decreases as temperature increases.

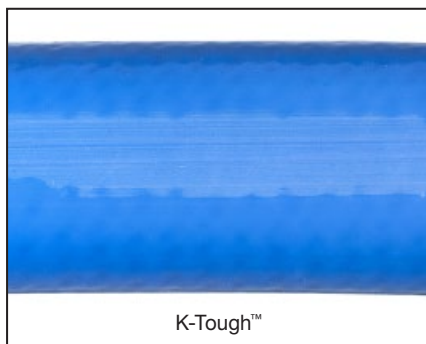
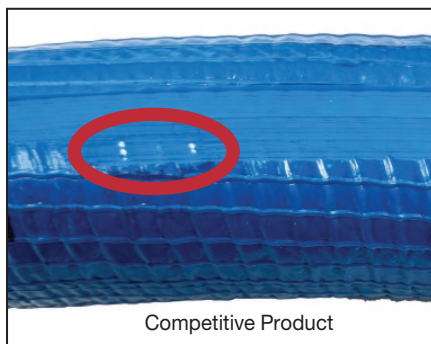
Note: For details of the following compliances, refer to page 63 of the Kuri Tec catalog.

FDA⁽⁰³⁾, MSHA⁽⁰⁸⁾, PHTHALATE FREE⁽¹⁵⁾, RoHS⁽¹⁶⁾

Because we continually examine ways to improve our products, we reserve the right to alter specifications or discontinue products without prior notice.

Engineered Innovation for Longer Hose Life

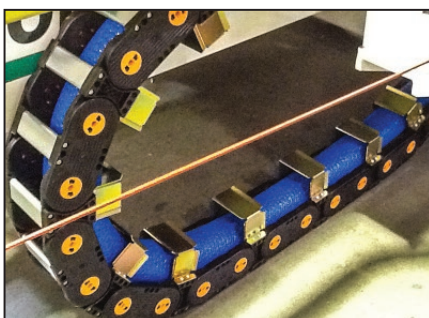
Abrasion Resistant Cover: K-Tough[™] and K-Tough[™] Oil have been shown to exhibit superior external abrasion resistance when compared to a similar competitive hose. Their abrasion resistant materials and thick outer layer protect the reinforcing yarn from exposure and potential damage.



In side by side abrasion testing, a similar competitive product displayed yarn reinforcement exposure, potentially compromising its integrity, which could lead to premature failure. K-Tough[™] exhibited no signs of yarn exposure or loss of integrity.

K-Tough[™] resists damage when dragged over rough surfaces.

High Flexural & Cycle Strength: K-Tough[™] and K-Tough[™] Oil are well suited for applications where the hose will be exposed to repeated flexing.



In cat-track applications, K-Tough[™] was shown to last six times longer than a competitive hose.

Oil Resistant: K-Tough[™] Oil has been shown to exhibit excellent oil resistance, meeting ARPM Class A (High oil resistance) standards.*

Oil Resistance Class	Maximum Volume Change	Tensile Strength Retained
* Class A (High oil resistance)	25%	80%
Class B (Medium oil resistance)	65%	50%
Class C (Limited oil resistance)	100%	40%

Because we continually examine ways to improve our products, we reserve the right to alter specifications or discontinue products without prior notice.

A Revolution in Kuri Tec[®] Hose Design!

K-Tough[™] and K-Tough[™] Oil represent a whole new breed of Kuri Tec[®] hose. Their durable construction is ideal for both tough in-plant applications, as well as more demanding outdoor applications where the hose is exposed to the elements, repeated flexing, dragging, impacts and other forms of abuse.

K-Tough[™] and K-Tough[™] Oil go where no Kuri Tec[®] hose has gone before!

Tank trucks...



...demanding in plant applications...

...suction pumps...



...and more!

Because we continually examine ways to improve our products, we reserve the right to alter specifications or discontinue products without prior notice.

Cautionary Statement

All Products sold and distributed by Kuriyama of America, Inc. are in the nature of commodities and they are sold by published specifications and not for particular purposes, uses or applications. Purchaser shall first determine their suitability for the intended purposes, uses or applications and shall either conduct its own engineering studies or tests, or retain qualified engineers, consultants or testing laboratories and consult with them before determining the proper use, suitability or propriety of the merchandise or Products for the intended purposes, uses or applications.

Kuriyama of America, Inc. ("Seller") does not recommend the Products for any particular purpose, use or application, and the Purchaser or user thereof shall assume full responsibility for the suitability, propriety, use and application of the Products. Purchaser shall follow all instructions contained in Seller's catalogs, brochures, technical bulletins and other documents regarding the Products. The Products, including but not limited to, hose, tubing or couplings, may fail due to the use or conveyance of substances at elevated or lowered temperatures or at excessive pressure, the conveyance of abrasive, injurious, flammable, explosive or damaging substances.

Hose or tubing used in bent configurations will be subjected to increased abrasion. Hose clamps or couplings may loosen after initial installation and all sections of hose and tubing including connections, couplings, clamps, conductivity and bonding should be inspected frequently, regularly and consistently, and should be replaced, adjusted or re-tightened for the avoidance of leakage, for the prevention of injuries or damages, and for general safety purposes. Except as indicated in its Limited Warranty, Seller shall not be liable or responsible for direct or indirect injuries or damages caused by or attributed to the failure or malfunction of any Products sold or distributed by it.

Purchasers or users of the Products should frequently and consistently undertake inspections and protective measures with respect to the use and application of Products, which should include the examination of tube and cover, conditions of the hose or tubing, and the identification, repair or replacement of sections showing cracking, blistering, separations, internal and external abrasions, leaking or slipped couplings or connections and make proper proof tests.

Limited Warranty

The Products sold or distributed by Seller are warranted to its customers to be free from defects in material and workmanship at the time of shipment by us, subject to the following provisions. ALL WARRANTY CLAIMS SHALL BE MADE WITHIN SIX (6) MONTHS AFTER SELLER SHIPPED THE PRODUCTS. SELLER'S LIABILITY HEREUNDER IS LIMITED AT SELLER'S EXCLUSIVE DISCRETION, TO 1) THE PURCHASE PRICE OF ANY PRODUCTS PROVING DEFECTIVE; 2) REPAIR OF ANY DEFECTIVE PRODUCT OR PART THEREOF; OR 3) REPLACEMENT OF ANY DEFECTIVE PRODUCT OR PART UPON ITS AUTHORIZED RETURN TO SELLER.

THIS WARRANTY IS IN LIEU OF AND EXCLUDES ALL OTHER WARRANTIES, EXPRESSED, IMPLIED, STATUTORY, OR OTHERWISE CREATED UNDER APPLICABLE LAW INCLUDING, BUT NOT LIMITED TO, THE WARRANTY OF MERCHANTABILITY AND THE WARRANTY OF FITNESS FOR A PARTICULAR PURPOSE. IN NO EVENT SHALL SELLER OR THE MANUFACTURER OF THE PRODUCT BE LIABLE FOR SPECIAL, INCIDENTAL, OR CONSEQUENTIAL DAMAGES, INCLUDING LOSS OF PROFITS, WHETHER OR NOT CAUSED BY OR RESULTING FROM THE NEGLIGENCE OF SELLER AND/OR THE MANUFACTURER OF THE PRODUCT, UNLESS SPECIFICALLY PROVIDED HEREIN. IN ADDITION, THIS WARRANTY SHALL NOT APPLY TO ANY PRODUCTS OR PORTIONS THEREOF WHICH HAVE BEEN SUBJECTED TO ABUSE, MISUSE, IMPROPER INSTALLATION, MAINTENANCE, OR OPERATION, ELECTRICAL FAILURE OR ABNORMAL CONDITIONS, AND TO PRODUCTS WHICH HAVE BEEN TAMPERED WITH, ALTERED, MODIFIED, REPAIRED, REWORKED BY ANYONE NOT APPROVED BY SELLER, OR USED IN ANY MANNER INCONSISTENT WITH THE PROVISIONS OF THE "CAUTIONARY STATEMENT" ABOVE OR ANY INSTRUCTIONS OR SPECIFICATIONS PROVIDED WITH OR FOR THE PRODUCT.

09/2005

Distributed by:



Kuriyama of America, Inc.

Headquarters, Sales Office and Warehouse Location

360 E. State Parkway, Schaumburg, IL 60173-5335

Phone: (847) 755-0360 • Toll-free FAX: (800) 800-0320

International FAX: (847) 885-0996

Web Site: www.kuriyama.com

E-Mail: sales@kuriyama.com



Visit us
www.kuriyama.com
on the Web!

The trademarks contained in this publication are trademarks of Kuriyama of America, Inc.

CONTACT OUR SALES/WAREHOUSE LOCATIONS BELOW WHICH SERVE YOUR AREA

SOUTHWEST WAREHOUSE KURIYAMA OF AMERICA, INC. HOUSTON

200 PORTWALL STREET, SUITE 100
HOUSTON, TX 77029
Phone: (713) 674-8212
Toll Free Phone: (800) 501-6808
FAX: (713) 674-5214
Toll Free FAX: (800) 800-5214

WESTERN WAREHOUSE KURIYAMA OF AMERICA, INC. SANTA FE SPRINGS

10749 SHOEMAKER AVENUE
SANTA FE SPRINGS, CA 90670-4039
Phone: (562) 941-4507
FAX: (562) 941-8940
Toll-Free FAX: (800) 326-8940

SOUTHEAST WAREHOUSE FORTNEY SALES CO., INC.

4221 CANTRELL ROAD NW
ACWORTH, GA 30101
PHONE: (770) 427-6528
FAX: (770) 423-9249
Toll Free FAX: (800) 423-9249
Web Site: www.fortneysales.com
E-Mail: sales@fortneysales.com

EASTERN WAREHOUSE EASTERN RUBBER & PLASTICS CO., INC.

100 GOLDMAN DR.
PLUMSTED INDUSTRIAL PARK
CREAM RIDGE, NJ 08514
Phone: (609) 758-0100
FAX: (609) 758-0102
Toll Free FAX: (800) 445-7138
Web Site: www.easternrubber.com
E-Mail: sales@easternrubber.com

IN CANADA:

KURI TEC CORPORATION

140 ROY BOULEVARD
BRANTFORD, ONT, CANADA N3R 7K2
Phone: (519) 753-6717
FAX: (519) 753-7737
Web Site: <http://www.kuritec.com>
E-Mail: sales@kuritec.com

IN MEXICO:

KURIYAMA DE MÉXICO S DE RL DE CV AV JOSE PALOMO MARTINEZ NO 520-20 BODEGA 5

PARQUE INDUSTRIAL OMOLAP
APODACA, N.L. CP:66633, MÉXICO

Telefonos: (81) 1086-1870 O 71

Lada sin Costo 01 800 822 52 00

FAX: (81) 1086-1869

Internet: www.kuriyama.com

Correo Electronico: ventas@kuriyama.com



kuriyama.com/50years

