

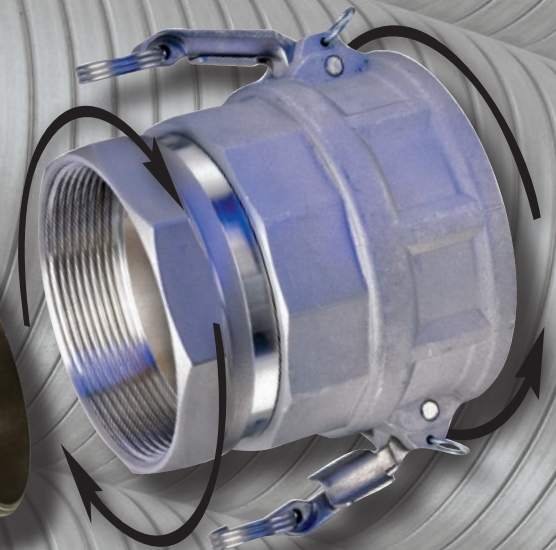
HOSE TEC® **TOUGH**

METAL HOSE™

by Kuriyama

METAL-HOSE-TO-GO™

- Hoses include pre-welded stainless threaded NPT (TOE) ends, no welding required
- Simply thread on coupling of your choice!
- In stock for immediate shipment



**Why wait
for fabrication?**



Kuriyama of America, Inc.



EDITION 0917

METAL-HOSE-TO-GO™

Stainless Metal Hose Assemblies

In Stock for immediate delivery and use!



■ HTS4200 –
Medium Weight
(.017" – .020"
strip thickness)
Rough Bore.



■ HTSS5150 – Lt.
Wt. with Stainless
Steel Liner (.015"
Armor/.015" Liner)
Smooth Bore.

■ HTSS5180 – Med.
Wt. with Stainless
Steel Liner (.018"
Armor/.015" Liner)
Smooth Bore.

Rough Bore (Unlined) Stainless Steel Hose

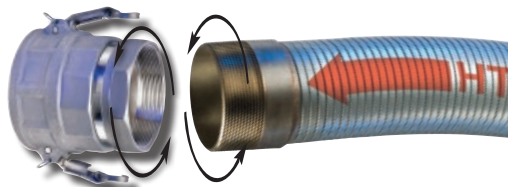
Former Part Number	New Part Number	ID (in)	OAL (ft)*	Minimum Bend Radius (in)	Weight (lbs/ea)
S203X120STOE	HTS4200-300X10TOE	3	10	11.00	22
S204X120STOE	HTS4200-400X10TOE	4	10	14.50	28
S204X144STOE	HTS4200-400X12TOE	4	12	14.50	33
S204X228STOE	HTS4200-400X19TOE	4	19	14.50	52
S205X120STOE	HTS4200-500X10TOE	5	10	17.00	34
S205X228STOE	HTS4200-500X19TOE	5	19	17.00	61
S206X120STOE	HTS4200-600X10TOE	6	10	22.00	42

Smooth Bore (Lined) Stainless Steel Hose

Former Part Number	New Part Number	ID (in)	OAL (ft)*	Minimum Bend Radius (in)	Weight (lbs/ea)
SS154X228STOE	HTSS5150-400X19TOE	4	19	15.00	67
SS184X120STOE	HTSS5180-400X10TOE	4	10	16.00	38
SS184X144STOE	HTSS5180-400X12TOE	4	12	16.00	45
SS184X180STOE	HTSS5180-400X15TOE	4	15	16.00	56
SS184X210STOE	HTSS5180-400X17.5TOE	4	17.5	16.00	65
SS184X228STOE	HTSS5180-400X19TOE	4	19	16.00	70
SS184X300STOE	HTSS5180-400X25TOE	4	25	16.00	92
SS185X180STOE	HTSS5180-500X15TOE	5	15	20.50	75
SS185X228STOE	HTSS5180-500X19TOE	5	19	20.50	93
SS186X120STOE	HTSS5180-600X10TOE	6	10	24.50	62
SS186X180STOE	HTSS5180-600X15TOE	6	15	24.50	90
SS186X228STOE	HTSS5180-600X19TOE	6	19	24.50	112
SS186X300STOE	HTSS5180-600X25TOE	6	25	24.50	146

* OAL (overall length) in "natural lie" state, actual length may vary slightly

1. Select your hose
2. Select your couplings
3. Thread together and done!



Please refer to the back page for the location of your nearest warehouse for availability of products/sizes shown.

BECAUSE WE CONTINUALLY EXAMINE WAYS TO IMPROVE OUR PRODUCTS, WE RESERVE THE RIGHT TO ALTER SPECIFICATIONS OR DISCONTINUE PRODUCTS WITHOUT PRIOR NOTICE.

Nominal Specifications

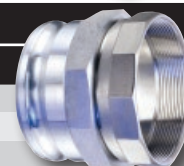
THREADED SWIVEL ALUMINUM FEMALE COUPLER WITH SS304 THREADED NPT INSERT

Part Number	Size (in.)	Weight Each (lbs.)	Standard Carton
KAS-C401	4	5.20	1
KAS-C501	5	6.53	1
KAS-C601	6	10.49	1



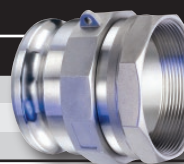
THREADED SWIVEL ALUMINUM MALE ADAPTOR WITH SS304 THREADED NPT INSERT

Part Number	Size (in)	Weight Each (lbs)	Standard Carton
KAS-E401	4	4.67	1
KAS-E501	5	5.42	1
KAS-E601	6	6.97	1



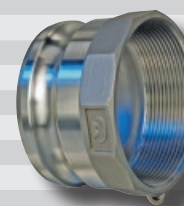
THREADED SWIVEL SS304 MALE ADAPTOR WITH SS304 THREADED NPT INSERT

Part Number	Size (in)	Weight Each (lbs)	Standard Carton
KSS-E401	4	6.12	1
KSS-E501	5	7.61	1
KSS-E601	6	11.07	1



THREADED PART 'A' QUICK-ACTING MALE ADAPTOR x FEMALE NPT (NON-SWIVEL)

Part Number	Size (in)	Weight Each (lbs)	Standard Carton†
AL-A300	3	0.70	35
SS304-A300	3	2.16	8
SS-A300	3	2.16	8
AL-A400	4	1.58	20
SS304-A400	4	2.88	6
SS-A400	4	2.88	6
AL-A500	5	1.75	4
SS304-A500	5	4.30	4
SS-A500	5	4.30	4
AL-A600	6	2.95	15
SS304-A600	6	6.00	2
SS-A600	6	6.00	2



Note: Couplings can be purchased individually also.

THREADED PART 'D' QUICK-ACTING FEMALE COUPLER x FEMALE NPT (NON-SWIVEL)

Part Number	Size (in)	Weight Each (lbs)	Standard Carton†
AL-D300	3	1.80	20
SS304-D300	3	3.82	8
SS-D300	3	3.82	8
AL-D400	4	2.16	10
SS304-D400	4	5.14	6
SS-D400	4	5.14	6
AL-D500	5	3.42	4
SS304-D500	5	8.00	4
SS-D500	5	8.00	4
AL-D600	6	4.24	10
SS304-D600	6	10.06	2
SS-D600	6	10.06	2



Note: Couplings can be purchased individually also.

WHITE NEOPRENE (FDA) GASKETS FOR QUICK ACTING COUPLINGS

Part Number	Size (in)	Weight Each (lbs)	Standard Carton
WN300	3	0.042	10
WN400	4	0.066	10
WN500	5	0.094	10
WN600	6	0.116	10



Note: For standard part "A" and "D" Quick-Acting Couplings, please refer to our separate Kuriyama-Couplings™ full line catalog. Web: <http://www.kuriyama.com>

Please refer to the back page for the location of your nearest warehouse for availability of products/sizes shown.

BECAUSE WE CONTINUALLY EXAMINE WAYS TO IMPROVE OUR PRODUCTS, WE RESERVE THE RIGHT TO ALTER SPECIFICATIONS OR DISCONTINUE PRODUCTS WITHOUT PRIOR NOTICE.

CONTACT OUR SALES/WAREHOUSE LOCATIONS BELOW WHICH SERVE YOUR AREA

SOUTHWEST WAREHOUSE KURIYAMA OF AMERICA, INC. HOUSTON

200 PORTWALL STREET, SUITE 100
HOUSTON, TX 77029
Phone: (713) 674-8212
Toll Free Phone: (800) 501-6808
FAX: (713) 674-5214
Toll Free FAX: (800) 800-5214

WESTERN WAREHOUSE KURIYAMA OF AMERICA, INC. SANTA FE SPRINGS

10749 SHOEMAKER AVENUE
SANTA FE SPRINGS, CA 90670-4039
Phone: (562) 941-4507
FAX: (562) 941-8940
Toll-Free FAX: (800) 326-8940

SOUTHEAST WAREHOUSE FORTNEY SALES CO., INC.

4221 CANTRELL ROAD NW
ACWORTH, GA 30101
Phone: (770) 427-6528
FAX: (770) 423-9249
Toll Free FAX: (800) 423-9249
Web Site: www.fortneysales.com
E-Mail: sales@fortneysales.com

EASTERN WAREHOUSE EASTERN RUBBER & PLASTICS CO., INC.

100 GOLDMAN DR.
PLUMSTED INDUSTRIAL PARK
CREAM RIDGE, NJ 08514
Phone: (609) 758-0100
FAX: (609) 758-0102
Toll Free FAX: (800) 445-7138
Web Site: www.easternrubber.com
E-Mail: sales@easternrubber.com

MEXICO WAREHOUSE

KURIYAMA DE MÉXICO S DE RL DE CV
AV JOSE PALOMO MARTINEZ NO 520-20
BODEGA 5
PARQUE INDUSTRIAL OMOLAP
APODACA, N.L. CP:66633, MEXICO
Telefonos: (81) 1086-1870 ó 71
Lada sin Costo: 01-800-822-52-00
FAX: (81) 1086-1869
Internet: www.kuriyama.com
Correo Electronico: ventas@kuriyama.com

CANADA WAREHOUSE KURI TEC CORPORATION

140 ROY BOULEVARD
BRANTFORD, ONT, CANADA N3R 7K2
Phone: (519) 753-6717
FAX: (519) 753-7737
Web Site: <http://www.kuritec.com>
E-mail: sales@kuritec.com

About Hose Tec...



Hose Tec is dedicated to manufacturing the highest quality flexible metal hose, delivered quickly and competitively priced.

Our plant is centrally located in the Midwest to provide fast delivery, and has been designed solely for the efficient manufacture of flexible metal hose and ducting.

Hose Tec's standard Hose Tec® Brand products are being inventoried in all Kuriyama warehouses.

We pride ourselves on our ability to meet our customer's individual needs. Whether you need a special length, special diameter, special materials of construction, special fittings, or just special handling, don't hesitate to ask!

PLANT AND WAREHOUSE LOCATION

HOSE TEC

Division of Kuri Tec Manufacturing, Inc.
2520 E. US Hwy 41
Williamsport, IN 47993-0206

Phone: (765) 762-5501
Toll-Free Phone: (800) 878-5501
FAX: (765) 762-5502
Toll-Free FAX: (800) 879-8232
E-Mail: sales@hosetec.com
Web: <http://www.hosetec.com>

Distributed by:



kuriyama.com/50years



Kuriyama of America, Inc.

Headquarters, Sales Office and Warehouse Location

360 E. State Parkway • Schaumburg, IL 60173-5335

Phone: (847) 755-0360 • Fax: (847) 885-0996

Toll-Free Fax: (800) 800-0320

E-Mail: sales@kuriyama.com

Web: <http://www.kuriyama.com>

